

 **LIUGONG**

LTC550L5 CRANE

(Left/right hand drive)

MOBILE CRANES



**A MACHINE
YOU CAN
TRUST**



TOUGH WORLD. TOUGH EQUIPMENT.

RAISING THE STANDARD.

A TEAM YOU CAN TRUST

Challenging projects need trusted strength and stability to get the job done. LiuGong has over 60 years' experience making cranes that deliver the most powerful lifting capacity combined with premium safety features and the benchmark for reliability.

We have earned a global reputation for designing the toughest machines and our mobile cranes share this design DNA. They are designed, built and supported by a team you can trust to put your performance first.

WE PUT YOU FIRST

Our customers tell us that they want mobile cranes that are easy to use, easy to maintain and easy to operate. With optimized safety and stability and with proven reliability and quality to work in the most demanding conditions. You can trust our cranes to deliver all this and more.



100% SAFETY COMPLIANT

You can choose LiuGong with confidence. Our mobile cranes are quiet, clean and conform to the latest environmental legislation standards for emissions.

LET'S PROVE IT



MORE THAN 70 YEARS EXPERIENCE MAKING CRANES



10% STRONGER LIFTING CAPACITY THAN COMPETITORS



360° 360 DEGREE CAB VIEW



10,000 HOURS BETWEEN OVERHAULS



2-5 DECIBELS QUIETER THAN COMPETITOR MODELS

TAKE A CLOSER LOOK.



YOUR SAFETY IS OUR PRIORITY

Your safety is paramount to us, so you can trust our mobile cranes to create the safest working environment.

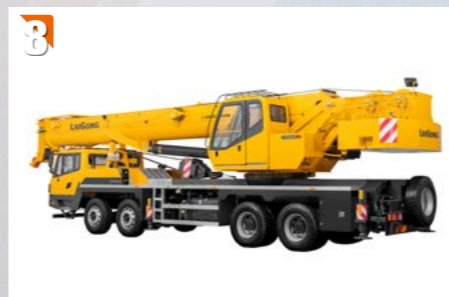
- 1 Stability is a key safety factor. Our high-strength anti-torsion frame provides the highest levels of stability and load bearing capacity no matter how tough the conditions.
- 2 Our ergonomic, high-visibility cab (Left-hand and right-hand drive options) with tempered window glass and anti-corrosion steel provides a 360 degree view of the jobsite, protecting the operator and co-workers from harm. Our cabs are safe and easy to access, have a spacious working environment and provide the highest levels of comfort.
- 3 Our machines have been designed to work safely day and night, 24/7. Onboard technology such as LMiliang, three-circle projector, height limiter and night vision level provide all-round safety protection from overload, over-winding, over-discharge and anti-tilt. To further enhance safety our cranes are also equipped with reversing camera imagery and winch monitors.



EASY TO MAINTAIN

Our aim is to make maintenance as fast and easy as possible to reduce unproductive downtime to a minimum.

- 4 With easy access to maintenance and service areas we've made checks and repairs fast and easy.
- 5 Our mobile cranes are powered by world famous Cummins engines renowned for easy maintenance and low running costs. With up to 10,000 hours between overhauls you can enjoy unmatched productivity.



TOTAL RELIABILITY

Trust is about relying on your mobile crane to deliver optimum performance - every time. We design performance and reliability in from the very start.

- 6 With a proven fuel-efficient, low noise and low maintenance Cummins engine combined with a FAST 9-Shift gearbox, you can rely on our mobile cranes to travel from site to site with speed, efficiency and comfort.
- 7 LiuGong designed hydraulics set the benchmark for reliability. Benefiting from a fixed displacement pump and load sensitive main valve, we deliver consistently stable operation, smooth compound action and excellent micro-motion performance.
- 8 Our intelligent, electronically controlled chassis system protects the lifting operation and reduces power consumption improving uptime and efficiency.



UNMATCHED LIFTING PERFORMANCE

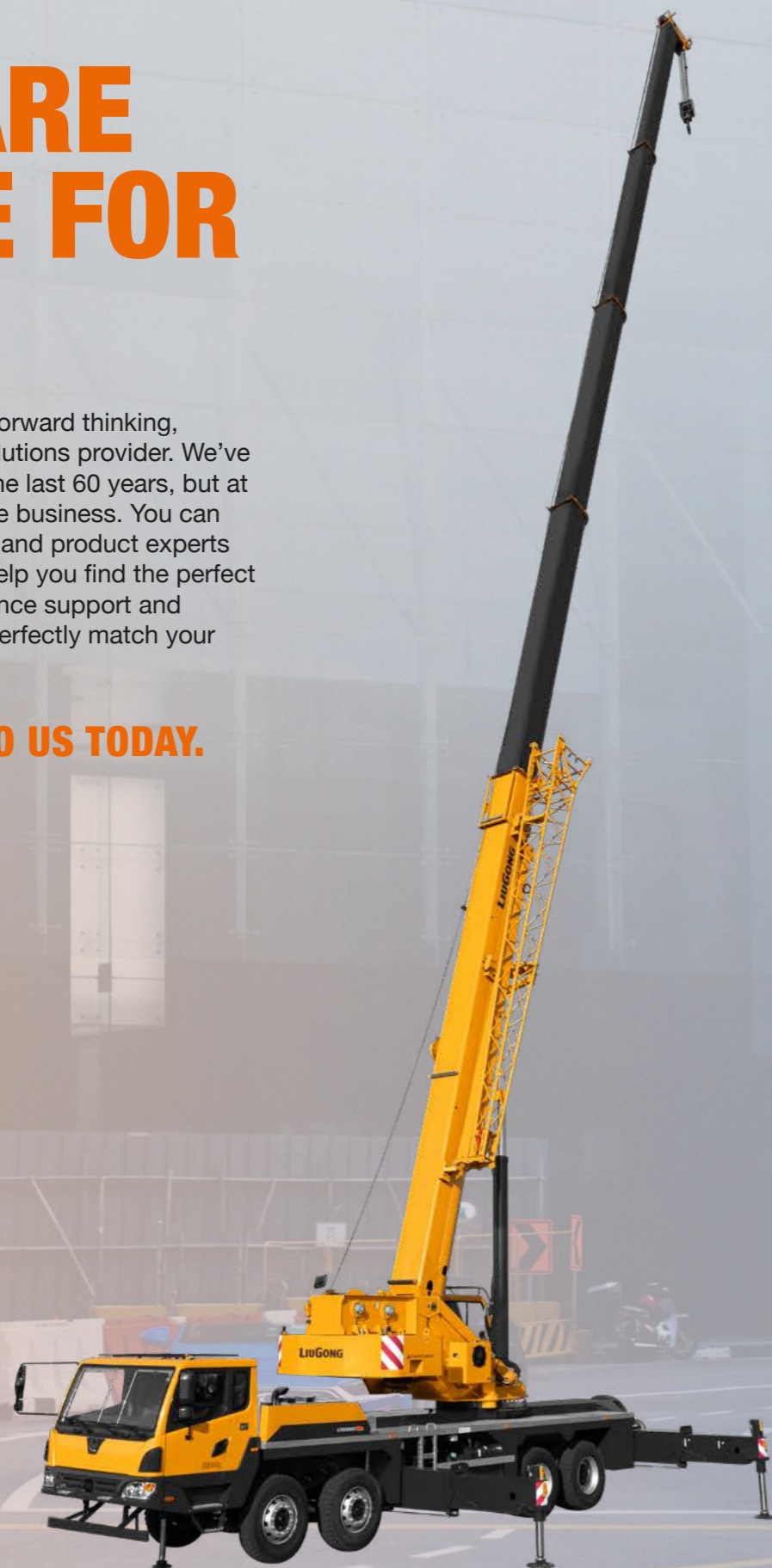
When it comes to lifting performance we deliver the perfect combination of stability, power, hydraulic performance and control.

- 9 Our cranes lead the field in both working radius and lifting capacity. LiuGong cranes are 10% stronger than the competition in most boom combinations.
- 10 Load sensitive main valve improves controllability and stability of compound actions and ensures fast hydraulic response.
- 11 Our winch employs a variable displacement motor to ensure high operational efficiency. Maximum single line speeds of main and auxiliary winches are up to 125 m/min.
- 12 Dead-weight luffing provides more stable luffing operation with low energy loss.

WE ARE HERE FOR YOU.

LiuGong is a global, forward thinking, customer focused solutions provider. We've come a long way in the last 60 years, but at heart, we are a people business. You can trust our sales teams and product experts to work with you to help you find the perfect equipment, maintenance support and financial solution to perfectly match your operational needs.

 **TALK TO US TODAY.**



SPECIFICATIONS LTC550L5 MOBILE CRANE

CATEGORY	ITEM		UNIT	PARAMETER	
Dimension	Overall length		mm	14,025	
	Overall width		mm	2,665	
	Overall height		mm	3,700	
	The axle distance		mm	1,450+4,200+1,350	
Weight	The total weight during driving		kg	40,800	
	Axle load	The front	kg	14,800	
		The rear	kg	26,000	
Power parameters	Engine model		\	ISLe340 30 (Stage III)	
	Rated engine power		kW/(r/min)	250/2,100	
	Rated engine torque		N·m/(r/min)	1,425/1,100-1,400	
Driving parameters	Max.travel speed		km/h	80	
	Min. turning diameter		m	24	
	Min. ground clearance		mm	245	
	Approach angle		°	19/10	
	Departure angle		°	13	
	The braking distance (speed 30km/h)		m	≤10	
Main parameters	Max. rated lifting capacity		t	55	
	Min. rated range		m	3	
	Swing radius		mm	3,945	
	Max. lifting torque	Basic boom	kN·m	1,962	
		Longest main boom	kN·m	1,111	
	Outrigger span	Transverse	m	7.5	
		Longitudinal	m	6.18	
	Lifting height	Basic boom	m	11.6	
		Max. main boom	m	45	
		Max. main boom+Jib	m	61	
	Boom length	Basic boom	m	11.6	
		Max. main boom	m	45	
		Max. main boom+Jib	m	45+16	
Jib offset angle		°	0, 15, 30		
Working speed parameters	Boom luffing time	Full lifting/descending time of boom	S	45/80	
	Boom extension time	Full extension/retraction time of boom	S	95/130	
	Max. swing speed		r/min	2	
	Max. lifting speed	Main winch	No load	m/min	125
		Auxiliary winch	No load	m/min	125

LTC550L5 LOAD CHART

UNIT: KG					
Working radius (m)	Main boom(m)				
	Outrigger fully extended to 7.5 m, with the counterweight of 10T. With fifth outrigger supported, the machine can fully swing by 360°				
	11.6	17.9	24.1	30.4	36.7
3	55,000	27,000			
3.5	47,500	27,000	25,000		
4	46,000	27,000	25,000		
4.5	44,500	27,000	25,000		
5	39,300	27,000	25,000	17,600	
5.5	35,000	26,000	25,000	16,900	
6	31,500	25,000	25,000	16,000	
6.5	28,500	24,500	24,000	15,200	12,100
7	26,000	24,000	22,600	14,500	12,000
8	22,000	23,000	20,300	13,200	11,100
9	18,800	19,800	18,400	11,900	10,200
10		17,400	16,700	10,800	9,500
12		12,900	13,500	9,200	8,100
14		9,800	10,400	7,900	6,900
16			8,300	6,850	6,000
18			6,700	6,100	5,350
20			5,500	5,450	4,800
22				4,900	4,300
24				4,100	3,800
26				3,500	3,500
28					3,100
30					2,750
32					
34					
36					
38					
I	0%	0%	0%	0%	0%
II	0%	25%	50%	75%	100%
Rate	10	7	6	4	3

UNIT: KG					
Working radius (m)	Main boom(m)				
	Outrigger fully extended to 7.5 m, with the counterweight of 10T. With fifth outrigger supported, the machine can fully swing by 360°				
	13.69	19.95	26.21	32.48	38.74
3	42,000	26,500			
3.5	41,500	26,500			
4	40,000	26,500	24,000		
4.5	38,000	26,500	24,000		
5	36,000	26,500	24,000		
5.5	33,000	26,500	24,000	17,000	
6	30,500	26,500	24,000	16,500	
6.5	28,000	26,500	24,000	15,600	
7	25,700	25,500	23,000	14,900	11,700
8	21,800	22,500	21,000	13,600	11,200
9	18,700	19,000	19,700	12,500	10,400
10	16,000	17,400	17,500	11,400	9,700
12		12,600	13,200	9,700	8,400
14		9,500	10,100	8,300	7,200
16		7,400	8,000	7,300	6,300
18			6,500	6,500	5,600
20			5,300	5,600	5,000
22			4,300	4,700	4,500
24				3,900	4,000
26				3,300	3,500
28				2,800	3,000
30					2,550
32					2,150
34					
36					
38					
I	25%	25%	25%	25%	25%
II	0%	25%	50%	75%	100%
Rate	10	7	6	4	3

LTC550L5 LOAD CHART

UNIT: KG					
Working radius (m)	Main boom(m)				
	Outrigger fully extended to 7.5 m, with the counterweight of 10T. With fifth outrigger supported, the machine can fully swing by 360°				
	15.78	22.04	28.3	34.56	40.83
3	42,000				
3.5	41,000				
4	40,000	26,500			
4.5	38,000	26,500	23,000		
5	35,500	26,500	23,000		
5.5	32,500	25,500	23,000		
6	30,000	25,000	23,000	16,300	
6.5	27,500	24,800	23,000	15,900	
7	25,200	24,500	21,800	15,300	
8	21,300	22,200	20,000	14,000	11,200
9	18,300	19,300	18,500	12,900	10,600
10	15,800	16,900	17,000	11,900	9,800
12	11,100	12,300	12,800	10,100	8,600
14		9,300	9,900	8,800	7,500
16		7,200	7,800	7,800	6,600
18		5,650	6,250	6,600	5,900
20			5,050	5,450	5,200
22			4,150	4,500	4,700
24			3,400	3,750	4,000
26				3,100	3,350
28				2,600	2,850
30				2,150	2,400
32					2,000
34					1,650
36					
38					
I	50%	50%	50%	50%	50%
II	0%	25%	50%	75%	100%
Rate	9	6	5	4	3

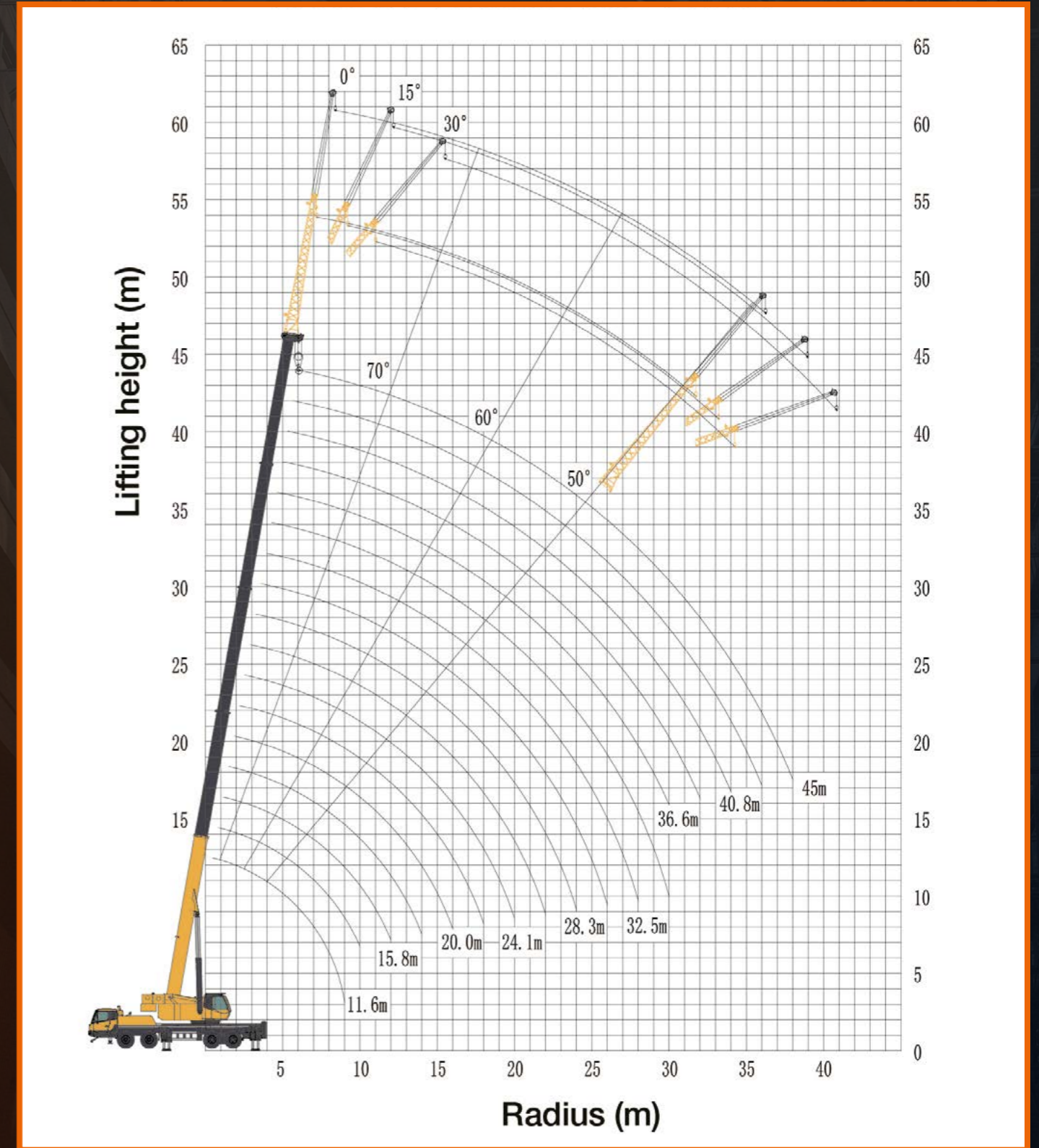
UNIT: KG					
Working radius (m)	Main boom(m)				
	Outrigger fully extended to 7.5 m, with the counterweight of 10T. With fifth outrigger supported, the machine can fully swing by 360°				
	17.86	24.13	30.39	36.65	42.91
3	38,000				
3.5	36,000				
4	34,000	26,200			
4.5	32,000	26,200			
5	30,000	26,200	22,000		
5.5	29,000	25,500	22,000		
6	28,000	25,000	22,000		
6.5	26,000	24,000	21,400	15,400	
7	25,200	23,000	20,300	15,400	
8	21,300	21,000	18,500	14,300	
9	18,600	19,100	16,900	13,300	10,500
10	15,600	16,900	15,600	12,300	9,900
12	10,900	12,100	12,700	10,600	8,800
14	8,000	9,100	9,700	9,200	7,700
16		7,000	7,600	8,000	6,900
18		5,500	6,000	6,400	6,100
20		4,300	4,900	5,200	5,500
22			3,900	4,300	4,600
24			3,200	3,600	3,800
26			2,600	2,950	3,200
28				2,450	2,700
30				2,000	2,250
32					1,850
34					1,500
36					1,200
38					
I	75%	75%	75%	75%	75%
II	0%	25%	50%	75%	100%
Rate	8	6	5	4	3

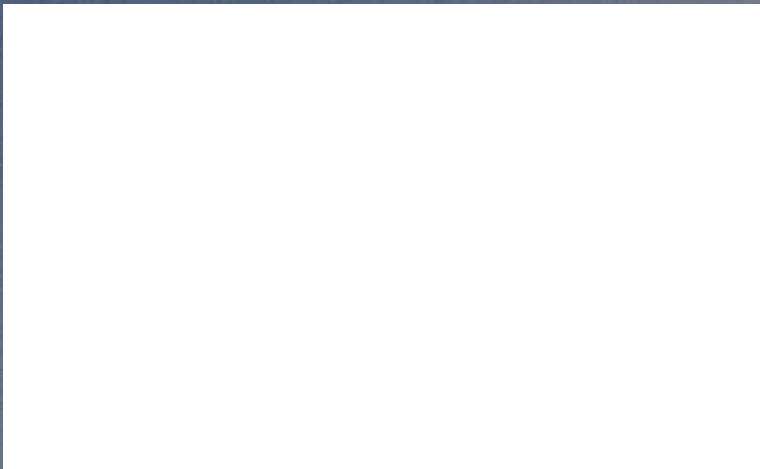
LTC550L5 LOAD CHART

UNIT: KG					
Working radius (m)	Main boom(m)				
	Outrigger fully extended to 7.5 m, with the counterweight of 10T. With fifth outrigger supported, the machine can fully swing by 360°				
	19.95	26.21	32.48	38.74	45
3	33,000				
3.5	33,000				
4	32,000				
4.5	30,000	26,000			
5	29,000	26,000			
5.5	27,200	25,000	20,400		
6	26,500	23,500	20,400		
6.5	25,500	22,500	19,900		
7	24,000	21,500	19,000	14,200	
8	21,000	19,800	17,300	14,200	
9	18,000	18,000	15,900	13,300	10,100
10	15,500	16,000	14,600	12,400	9,800
12	10,900	11,950	12,600	10,900	8,800
14	7,900	8,950	9,550	9,600	7,900
16	5,850	6,850	7,450	7,850	7,000
18		5,350	5,900	6,300	6,300
20		4,200	4,750	5,100	5,400
22		3,250	3,850	4,200	4,450
24			3,100	3,450	3,700
26			2,450	2,800	3,100
28			1,950	2,300	2,550
30				1,850	2,100
32				1,450	1,700
34					1,400
36					1,100
38					850
I	100%	100%	100%	100%	100%
II	0%	25%	50%	75%	100%
Rate	7	6	4	3	3

UNIT: KG			
Outrigger fully extended to 7.5 m, with the counterweight of 10T. With fifth outrigger supported, the machine can fully swing by 360°			
Main boom45+ Jib9 (m)			
Installation angle	0°	15°	30°
Main boom angle of gradient	Lifting Capacity		
80°	4,000	2,800	2,400
78°	4,000	2,800	2,300
76°	3,800	2,700	2,300
74°	3,500	2,500	2,250
72°	3,200	2,400	2,000
70°	3,000	2,100	1,950
68°	3,000	2,100	1,900
66°	2,800	1,950	1,800
64°	2,600	1,900	1,800
62°	2,300	1,800	1,700
60°	2,000	1,500	1,400
58°	1,700	1,300	1,200
56°	1,400	1,100	1,000
54°	1,200	900	850
52°	1,000	800	700
Main boom45+ Jib16 (m)			
Installation angle	0°	15°	30°
Main boom angle of gradient	Lifting Capacity		
80°	2,700	1,500	1,100
78°	2,500	1,500	1,100
76°	2,250	1,350	1,100
74°	2,200	1,300	1,100
72°	1,900	1,200	1,000
70°	1,800	1,150	950
68°	1,700	1,150	950
66°	1,600	1,100	900
64°	1,600	1,100	900
62°	1,550	1,000	850
60°	1,500	1,000	850
58°	1,300	900	850
56°	1,100	900	800
54°	1,000	800	700
52°			

LTC550L5 LIFTING LOAD CHART





Guangxi LiuGong Machinery Co., Ltd.
No. 1 Liutai Road, Liuzhou, Guangxi 545007, PR China
T: +86 772 388 6124 E: overseas@liugong.com
www.liugong.com

Like and follow us:



LG-PB-WW-LTC550L5-072023-ENG

The LiuGong series of logos herein, including but not limited to word marks, device marks, letter of alphabet marks and combination marks, as the registered trademarks of Guangxi LiuGong Group Co., Ltd. are used by Guangxi LiuGong Machinery Co., Ltd. with legal permission, and shall not be used without permission. Specifications and designs are subject to change without notice. Illustrations and pictures may include optional equipment and may not include all standard equipment. Equipment and options varies by regional availability.