



Engine	Yanmar 4TNV86CT-PLY
Rated Power	35.5 kW (47.6 hp / 48.3 ps) @ 2,200 rpm
Net Power	33.5 kW (44.6 hp / 45.5 ps) @ 2,200 rpm
Operating Weight	5,570 kg
Max. Digging Depth	3,630 mm
Standard Bucket Capacity	0.16 m ³

9057F_{ZTS} EXCAVATOR

9057F_{ZTS} SPECIFICATIONS >>>

ENGINE

Emission Regulation	Tier 4F / Stage V
Manufacturer	Yanmar
Model	4TNV86CT-PLY
Rated Power	35.5 kW (47.6 hp / 48.3 ps) @ 2,200 rpm
Net Power	33.5 kW (44.6 hp / 45.5 ps) @ 2,200 rpm
Peak Torque	176.6 N·m @ 1,560 rpm
Number of Cylinders	4
Displacement	2.091 L

UNDERCARRIAGE

Shoe Width	400 mm
Number of Shoes per Side	74
Number of Upper Rollers per Side	1
Number of Bottom Rollers per Side	5

TRACK DRIVE

Maximum Travel Speed	4.2 km/h
Drawbar Pull	60 kN

SWING SYSTEM

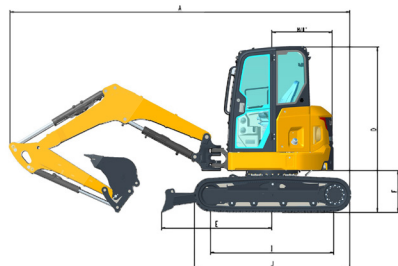
Swing Speed	9.6 rpm
-------------	---------

HYDRAULIC SYSTEM

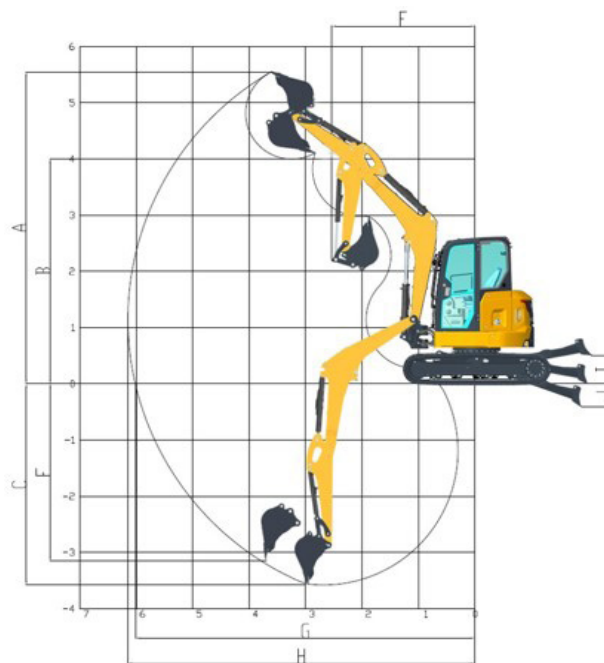
Main Pumps Total Flow	149.6 L/min
Relief Pressure, main	27.4 MPa

DIMENSION

A. Transport Length	5,650 mm
B. Transport Width	1,960 mm
C. Overall Width of Upper Structure	1,904 mm
D. Transport Height	2,550 mm
E. Distance from Dozer to Swing	2,060 mm
F. Counterweight Ground Clearance	631 mm
H. Tail Swing Radius	1,045 mm
I. Length to Center of Rollers	1,990 mm
J. Track Length	2,505 mm
K. Track Gauge	1,560 mm



Unit: mm



BOOM & ARM

Boom Length	2,850 mm
Arm Length	1,570 mm

WORKING RANGE

A. Max. Cutting Height	5,571 mm
B. Max. Dumping Height	4,000 mm
C. Max. Digging Depth	3,630 mm
E. Max. Vertical Wall Digging Depth	2,800 mm
F. Min. Front Swing Radius	2,558 mm
G. Max. Digging Reach on Ground	6,040 mm
H. Max. Digging Reach	6,105 mm
Bucket Digging Force (ISO)	44 kN
Arm Digging Force (ISO)	27 kN

BUCKET PERFORMANCE

Std. Bucket Heaped Capacity (Referenced)	0.16 m ³
Min. Heaped Capacity of Bucket Options	0.06 m ³
Max. Heaped Capacity of Bucket Options	0.26 m ³

SERVICE CAPACITIES

Fuel Tank	67 L
Engine Oil	6.3 L
Cooling System	14 L
Hydraulic Reservoir	54.3 L
Hydraulic System Total	61 L

Guangxi Liugong Machinery Co., Ltd.

No. 1 Liutai Road, Liuzhou, Guangxi 545007, PR China
T: +86 772 3886124 E: overseas@liugong.com
www.liugong.com

08/2023 Designed by LiuGong

Specifications and designs are subject to change without notice. Machines shown may include optional equipment. LiuGong standard and optional equipment may vary from region to region. Please consult your LiuGong dealer for information specific to your area. Engine power kW is converted to metric hp in this file (1 kW=1.34 hp).